



ASP NEWS September 2004

The Newsletter of the
Auckland Studio Potters
Society Inc.
ASP Centre
96 Captain Springs Road
PO Box 13-195 Onehunga
Directors: Peter Lange,
Duncan Shearer
Phone: (09) 634 3622
Fax: (09) 634 3626
Email: asp@ceramics.co.nz
Web: www.ceramics.co.nz

Studio Opening Hours

| | |
|-----------|---------------|
| Monday | 12.30pm - 5pm |
| Tuesday | 9am - 5pm |
| Wednesday | 12.30pm - 5pm |
| Thursday | 12.30pm - 5pm |
| Friday | 12.30pm - 4pm |
| Saturday | 10am - 4pm |

Remember to pay \$2 per hour
up to a maximum of
\$6.00 per day

Fire & Clay

special workshop

ASP's 40th Annual Exhibition

Jenny Williams

With a little over 3 weeks to go I hope everyone now knows about the exhibition. It will run from Wednesday 22nd September with the Exhibition Opening at 6.30 pm (invitation enclosed - bring friends and family; there'll be wine, food and music). We have a slightly longer exhibition this year, closing on the 17th October. Drop off date is Sunday the 19th September, from 10am until 4pm, at the Mairangi Arts Centre, 20 Hastings Road, Mairangi Bay. Any helpers would be welcome, just a matter of making sure entry forms are correct, accepting pots, and checking that exhibitors are paid up members. If that little fact has slipped your mind you will be able to sign up on the day. If you can lend a hand please ring the ASP or Jenny (638 8800). Closing time is 4pm. NO LATE ENTRIES.

Monday is judging day which will keep our selector, Lee Le Grice, busy. Any pots not accepted for the exhibition will need to be collected Monday afternoon or Tuesday. The owners of pots to be collected will be rung. Mairangi is a busy place, with lots of activities, and as a result they do not have storage space. Any exhibit packaging will have to be taken home with you after dropping of your exhibits, for the same reason. Tuesday is set up-day and Wednesday will see the catalogue finalised, and the opening that night.

The exhibition will be open 9.30am - 4pm Monday to Saturday and 1.30 - 4pm Sundays. It is worth going to the exhibition again, aside from opening night, to have a really good look without the crowds of people. The exhibition will be dismantled on Sunday 17th October and any unsold items may be collected after 4pm on the 17th or Monday the 18th.

During the course of the exhibition there will be 2 slide talks. Thursday 30th September - 7pm: "A Potter in India" with Duncan Shearer and on Thursday 7th October - 2.30pm: "A Potter in Nigeria" with Peter Stichbury. Make a note in your diary, well worth seeing, both extremely interesting, professional potters.

Our guest exhibitors this year are Toby Stafford and Rod Davies, both from the Far North, both great potters who make pots of very good quality and at very reasonable prices. We are delighted to have special displays by them - it will be worth the trip to the gallery just to see their work.

See you Wednesday 19th for the Grand Opening!!

2-day Hand-Building Workshop with Bruce Martin

16th - 17th October at the ASP Centre
10am - 4pm Shared lunch. Fee \$80.
Limited to 12 - hands-on participation only.

Bruce has been working with clay for many years, specialising in slab-built pieces and anagama firing. In 2002 Duncan and I attended a conference in Japan, and Bruce was another of the invited guests. Our work spaces were open to the public and while Duncan and I attracted a modest following, Bruce's table was always completely surrounded by onlookers, fascinated by his quiet craftsmanship and his obvious affinity with the Japanese aesthetic.

At this weekend you will learn how to form slabs, shape and join them securely, and make a variety of forms from bottles to boat shapes. It will be a school suitable for all levels of experience from beginners to advanced.

During the school Bruce will also give a slide lecture on his firings and experiences with anagama kilns both in New Zealand and in Japan. He and his wife Estelle would go through 25 tonnes of wood during one of their 10 day firings!

A great chance to learn the basic rules of slab-building, from an experienced teacher.



Coming up on the 5th December. Start putting aside stock for our big sales market. Last year we sold over \$12,000 worth and this year we hope to increase that by 25%. There will be food (including our new tandoori oven and pizza oven combined), competitions, a minor auction, music, demonstrations, exhibitions (Diploma class), general end-of-year celebration. Put it in your diary now!

General News

Peter Lange



Very quiet month for me with a couple of bouts of flu interrupted by a trip to New Plymouth to teach a one-day school. My thanks to Lois, Trien and Duncan for covering the days I was away sick. The Centre is running steadily with constant improvements – this month Lois and Rhonda have painted the “gallery” half of the old building and with the new shelves installed, the tutors’ work is well displayed. Still more to come, but there are some good shopping moments to be had out here these days.

Charade, our resident Diploma student, has mucked out the scruffy back area and transformed it into a wonderful garden – we’ll plant a few natives over the next month and it is now a pleasure to venture out there rather than an embarrassment; it looks so much better too for the many members of the public who head into Waikaraka Park through the adjacent gateway. There is no defined boundary and I still laugh at the memory of the huge hairy dog, the size of a small horse, who spotted the clay bath and leaving his master with leash burns on his hands, hurtled right in, rolled around a few times and then jumped out covered in slip. There is always the moment when the dog stops still and you know he is getting ready for the biggest shake of his life, and there’s nothing you can do to stop him and no time to run – so he did this huge shake-down and slip went all over his owner, the walls of the building and right up onto the roof. I hosed the building down and the dog ran off into the park and the night. Half an hour later he came back on his way home and did the whole thing again. This time I got ticked off by the owner for having a bath of clay not fenced off.

There has been a happy ending to the Steve Heinemann cancellation. We had bought our tickets from Qantas and

appealed to their good nature to allow a refund even though they had no obligation to do so and what do you know – they have sent a very generous letter offering a refund (less the agent’s fees), so we are very grateful and we recommend Qantas to all of you as the Potters’ Airline. PS My grandmother Edith Fysh had a cousin Hudson Fysh who founded Qantas (one of the Flying Fyshes) and I did mention that in the letter.

Note from a happy member: Hey guys, I’m too excited to hold this in, my work has been chosen as one of the finalists for the James Wallace Art Award. Yes -my bomb series. Thought you might be interested to know - Lang Ea.

Come and say hello, have a cup of tea. Don’t forget the ASP Exhibition – pots in 19th September.

Please note: The Centre will be closed for casual use on Sat 16th October while the Bruce Martin school is on.

Marketing Evening

Priscilla Brady

There was a good turn out to a most informative evening with Peter Collis on the promotion and sale of a potter’s wares. We were taken through the different pitfalls of marketing, not just of the products but also more importantly, of one’s self! Peter outlined the importance of deciding *where* we wanted to place ourselves in the market place and then achieving that goal. Another factor which came into play was doing one’s homework for the viability of a “product” before jumping into the deep end with various “sure-fire” sales.

One of *the* crucial points which Peter reinforced was the necessity to exhibit!!! Thus every “show” that is on, needs to have *your* piece in it, otherwise how is the public to know you exist?

The evening was worth the effort it took to come down from Warkworth.



Community Centre Mural

Richard Northey

It has just been announced at the Local Government New Zealand Conference that this arts project in Onehunga won the national prize in its category in The Creative New Zealand Art Awards. It was the only arts project in the Auckland region to win an award. My heartiest congratulations to you all and to the artists involved.

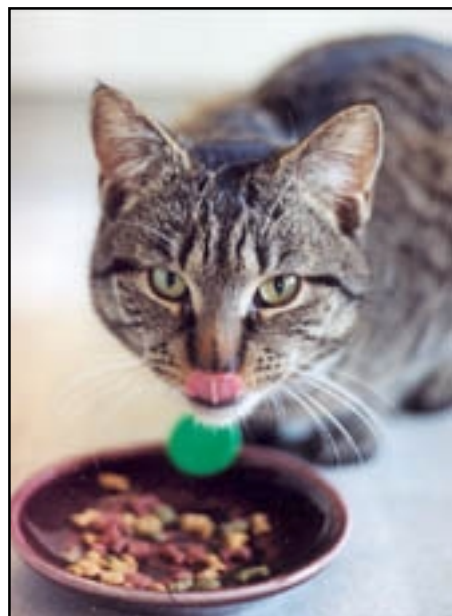
Grog the Castrati Cat

The cat was knackered by the SPCA yesterday. Our resident rat catcher was doing a fabulous job, proof was that in the brief 24 hours of his incapacitation a mouse appeared in the studio. So if you’re passing with the odd packet of cat biscuits please feed the cat.

ASP New Members

Welcome to:

Evie Codman
Jenni Taris
Sandy Stonham
Yeon Mi Chea



Brian Gartside Weekend

John Pirtle

It is one of the time honoured functions of organizations such as Auckland Studio Potters to run workshops and seminars for members at various times. As a result, the range of topics and the diversity of the speakers made available are of seemingly infinite variety. If a member, over a course of a year, or better still several years, could not find at least one workshop that interested them then perhaps they should ask themselves why they are involved with clay. Some members almost seem to belong to the society for the express purpose of attending such workshops (and God bless 'em, I say, we need the money and their lunch contribution!)

However, it is probably not entirely untrue to say that most sessions do follow a general, basic pattern. Well known potter, distinctive style, invited to demonstrate what they do to a passive group, some of whom over the next few months may try to replicate some or all of the techniques shown. Nothing essentially wrong with that, very focused, outcome derived as far as it can be, and everyone pretty well knows what to expect.

And then there is Brian Gartside. The Friedensreich Hundertwasser / Jackson Pollock of the New Zealand Pottery fraternity – “what do you mean

Triaxial Blend, I haven't got a clue what that is!”

To have a potter presenting a workshop who, from the very first minute makes it clear that this is going to be a very different weekend indeed, and then spends every moment of the weekend proving it took some getting used to. Great stuff, more power to his elbow, maybe the timely death of the prescriptive blotting paper seminar is at hand. Be that as it may, this weekend started off with a series of glaze mixes, largely random (two of any of these plus one of any of these plus a colourant) that occurred at such a furious pace, it looked like a brand new Olympic event. Most participants had been able to get small boxes bisqued prior to the testing and these helped to ensure that the shelves in the large electric kiln remained almost completely undamaged. There must have been something over 250

tests assembled, fired that afternoon and evening then extracted on Sunday morning. It is no truism to describe the assembled tests as kaleidoscopic – the colourants even included uranium and furious scribbling of mixtures into individual notebooks followed for later investigation.

On the Saturday afternoon Brian diversified into paper clay, its



origins (from an Englishman of Indian extraction, at a demonstration at the Banff Centre for the arts, to potters from everywhere, who said he knew nothing about clay and was most certainly not a potter – he was an artist!) I finally discovered who it was who had made the famous paper clay suitcase, as Brian demonstrated by fastening a bone dry handle to a bone dry slab then picking it up – it worked, too. Also on the Sunday morning, Brian demonstrated the creation of terra sigillata (yes, it is Latin, Brian, from sigillatus meaning sealed). Emphasised that the amount of sodium silicate wasn't prescriptive and it wasn't even necessary to siphon off the top layer of water if you didn't feel like it. Told you this was a different weekend. Build it up in thin brushed or sprayed layers and it works a treat.

Then he returned to paper clay, demonstrating the addition of soft clay to bone dry and its working into abstract sculptures with the addition of already fired and glazed inserts, possible because the reduced shrinkage of paper clay allowed all the pieces to fire together without falling apart.

The weekend finished with a demonstration of freeform cutting of masking tape outlines to mask a large bisqued tile, prior to initial glazing. He then ran perilously close to giving a formula when he wrote up on the board the ingredients for his standard glaze, but saved the day by explaining that several of the ingredients were “from – to” proportions – you had me worried for a minute there Brian. As for the slide shows, it would be easy to bury the reader in an avalanche of adjectives to describe them. From a “then to now” survey of work, to a series of materials from string to feathers to onion skin clamped into slide holders and projected, to computer created line drawings, the colours, lines and forms bounded onto the screen. To fin-

**CLAYS
GLAZES
CHEMICALS
STONEWARE STAIN**

AND MORE

Everything for the potter at:

CCG INDUSTRIES LTD

33 Crowhurst St. Newmarket

Phone 0-9-524 9758 or 0-9-524 8208

MONDAY-FRIDAY 8:30 am-5pm

See the **LARGEST** range of **KILNS** available:
pottery or china painting – electric – gas – fullfibre
All with our 12 months unconditional guarantee

**THE ELECTRIC FURNACE
COMPANY LTD.**

73 Wiri Station Rd, Manukau City

PO Box 76-162 Manukau City

Phone 0-9-263 8026

Cheapest spare elements with guarantee for any make of kiln.
Also other spare parts, temperature controls, pyrometers etc.
We manufacture gas burners and blowers.

Continued on page 4

classified

For Sale:

LPG Cotter kiln, 15cuft, insulating brick and fibre, includes thermocouple and probe. Very tidy condition - \$2800. Shelves: Silimelite - 16"X16" & 18"X12" - \$20 each. Silicon Carbide - 16"X11" - \$40 each. Props, 9" thermocouple - \$75. Bricks - H30 and H45, straights and arch, very clean - \$1.20 each. Fire Clay - A30 47kg - \$38. Cane teapot handles - \$1.50 each. Wooden spigots - \$1.50 each. Corks - up to \$1 each. Candles - small 80c, large - \$1. Contact Bonnie Oswald, 2670436, 021 1221047

12 cu ft front loading FE kiln with programmer including loads of shelves, props, etc all in excellent condition. Kiln is in very good condition (some corrosion on top of kiln only). Kiln can fire pieces up to 90 cm high. Can be viewed at the Art Society rooms in Ngaruawahia. Asking price - \$5,000 neg. Phone Tammie on (bus hrs) (07) 839 1304 extension 839 or (after hrs) (07) 856 1270

Work Wanted:

Ceramic designer, experienced with model making and plaster casting. Ph: Tohas Priesol on 027 4135532

Wanted:

Small, Medium and Large electric kilns. Phone: David Tasker 8382979

WE PROMISE SATISFACTION

EASY TO FIRE • CONSTANTLY BETTER RESULTS
KILNS FOR EVERY PURPOSE from 0.6cu.ft. to 30cu.ft.

POTTERY, CERAMICS, RAKU, PORCELAIN DOLLS, ENAMELLING, CHINA PAINTING, CRUCIBLES, GLASS KILNS FOR FUSING AND SLUMPING

All kilns are available in FULL FIBRE (layered or Stack Bonded); FULL BRICK; or FIBRE & PARTLY BRICK.

Suppliers of slab rollers, banding wheels, kiln and raku burners, ceramic fibre, kiln bricks, fibre cement, anchors, shelves, props, pyrometers, controllers, elements for most kilns (reasonably priced).

Write for more details to:



FURNACE ENGINEERING (1986) Ltd
Razorback Road RD2 Pokeno 1872
Phone: 0-9-233 6690
Fax: 0-9-233 6690
Email: FEKILN@IHUG.CO.NZ
Internet: www.furnace-eng.co.nz

WESTERN POTTERS SUPPLIES

FOR ALL MATERIALS AND EQUIPMENT

- casting slips (white, terracotta and stoneware)
- clays
- raw materials
- tools
- kilns and equipment
- ceramic colours
- glazes (transparent & opaque)
- on-glaze, glaze and body stains
- enamels

UNIT 4/43a LINWOOD AVE. MT. ALBERT
PO BOX 60126 Titirangi Ak7
Phone (09) 815 1513 Fax (09) 815 1515
quentin.w@ihug.co.nz

Continued from page 3

ish the last show by then projecting the slides onto a large white bisqued pot was to intensely tantalize those watching with the inadequacies of current technology.

What was the negative side of a weekend like this? Only two things - it was too blooming short and I've got to go back to work tomorrow!

events

West Auckland Pots

Saturday 23rd October, 10 am to 3 pm: All Hands on deck for pottery promotion of the west. This day is an ideal opportunity to show off the amazing talents of this area and encourage people to try clay. Stalls are available; cost around \$10 to \$15 covers the hire of the hall, the more we have the better it will be cost-wise. We need demonstrators, pots for sale, hands-on activities, Phone Lorraine Barnett 816 8008 or email bigtrees@paradise.net.nz

Two Pottery Workshops at Creative Joy Studio - 266 Pollok Wharf Road, Pollok, RD4 Waiuku Tel 09 235 6283

Petr Jurnicek, Artist in Residence at Creative Joy Studio, will be conducting two pottery workshops as part of his residency programme here in New Zealand. His residency is supported by the Creative Communities Funding Scheme administered by the Franklin Arts Cultural Centre. Petr is a professional potter from Czech Republic. He has a successful pottery business in his country and has been making functional wares for the last 10 years. Though he is only 28 years old, he is well known in his country. He made every single piece of pottery used in the famous Pernstejn Castle of Czech Republic.

The Dates:

September 18 & 19 (Sat & Sun)

October 9 & 10 (Sat & Sun)

Time: 10.00 am - 3.00 pm

(Bring your own lunch. Tea/Coffee and light refreshments will be provided.)

Gold coin donation will be appreciated.

Hello, my name is Tim Silvey

I'm an inventor/artist living in the Ozarks USA. For some time I've been interested in moving to New Zealand and creating an international arts manufacturing and promotions company. I need a local list of motivated potters and artists who would consider working on some of my creations and create some revenue!!! I want to make sure when I get there, we can go to work a.s.a.p. to fill all the orders I already have and to create new and exciting things for the future. Let me know if you can help or point me in the right direction.

p.s no government agencies, they bore me. creative_enterprises@hotmail.com

New Absolute Beginners Class

This is an excellent class for first-time potters. It is a 6 week course of 2 hours every Wednesday evening (7-9pm) and it's only \$85 - with some clay and firing thrown in! Maybe there's a member of your family who wants to test the waters - Chris Southern is the ideal person to help them with that.

Starts 15th September.

exhibitions

Objectspace

"Left at the Members Lounge" (until 25th September) is the first exhibition curated for Objectspace's new centre which provocatively considers the past, present and future of objectmaking. Featuring works by Steve Carr, Octavia Cook, Jim Dennison & Leanne Williams, Megan Hansen-Knarhoi, Glen Hayward, Gregor Kregar, Mark Mitchell, Shelley Norton, John Roy and Harry Watson.

"American Modern": 14 August to 25 Sept.

In the Vault we are presenting an installation of American Modern ceramic tableware designed by Russel Wright from the collection of Billy Apple and Mary Morrison. American Modern was the first American designed and manufactured modernist tableware and is recognised as a twentieth century design classic that is permanently displayed at the Cooper-Hewitt National Design Museum in New York. Wright's modernist dinnerware has rarely been seen in New Zealand. We believe that this is the first New Zealand American Modern installation as post war import restrictions and the favouring of the British ceramics industry precluded its importation into NZ.

Uxbridge Centre:

Exposed Cast Class Exhibition, 25th August to 16th September
35 Uxbridge Rd, Howick Ph: 5356467

Pots of Ponsonby

September 5th to 19th: Wooden Bowls by Rick Taylor
Platters Exhibition, group show, Sept 20th to October 10th. 298 Ponsonby Rd.

Masterworks Viaduct Gallery:

September 1st -18th: Paul Maseyk exhibits new work developed during a Creative New Zealand residency at Driving Creek Railway and Potteries.

From 21st Sept - 2nd Oct: an exhibition of work from artists who teach as part of the Otago Polytechnic ceramics programme including: Madeleine Child & Philip Jarvis, Chris Weaver, Michael Tannock, Brian Staite, Rob Cloughley, Marie Strauss, Nicola McLaren, Peter Lange, Duncan Shearer, John Dawson, John Parker, Peter Collis, Jim Cooper and Neil Grant.